

Name:		
Location:		
Email:		
Phone:	Cell:	
Fax:	Cover: Enduro-Loc™ KEDER	
Length:	Centers:	Arc:
Rafter Coating: ASTM-A123 Hot Dip Galvanized 3.9 mils Zinc		
Foundation:		

88'-0" PROFILE INTEGRITY TRUSS

THIS DOCUMENT CONTAINS
INFORMATION PROPRIETARY TO
ACCU-STEEL INC. IT SHALL NOT BE
REPRODUCED, USED, OR DISCLOSED
WITHOUT PRIOR WRITTEN
PERMISSION OF ACCU-STEEL INC.



Notes:

Date: 01/03/19

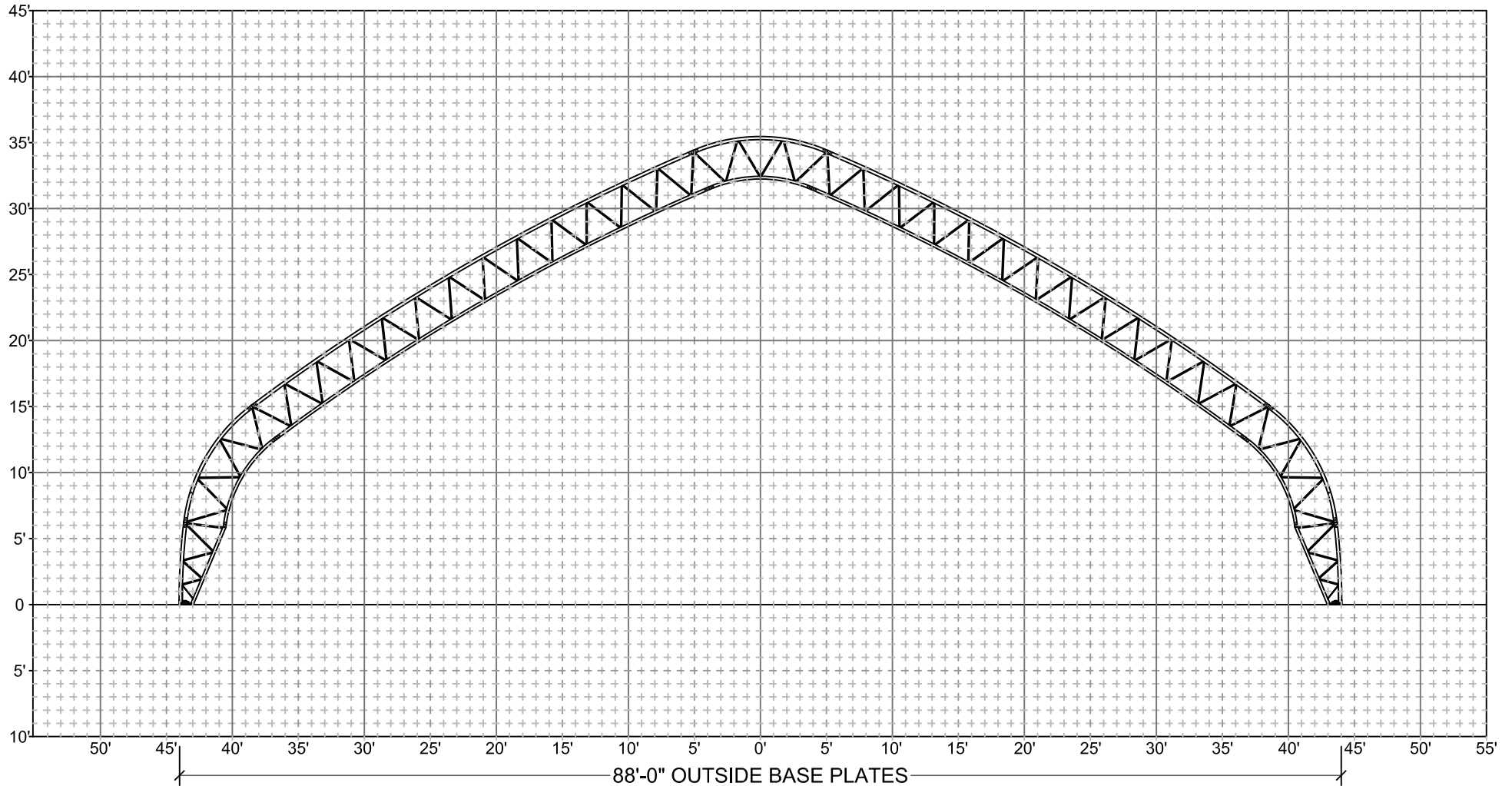
Project:

Drawn By: JTK

PROFILE SUBJECT TO CHANGE

Sales #

1-877-338-6936
www.asicoverbuildings.com
sales@asicoverbuildings.com



1'x1' GRID